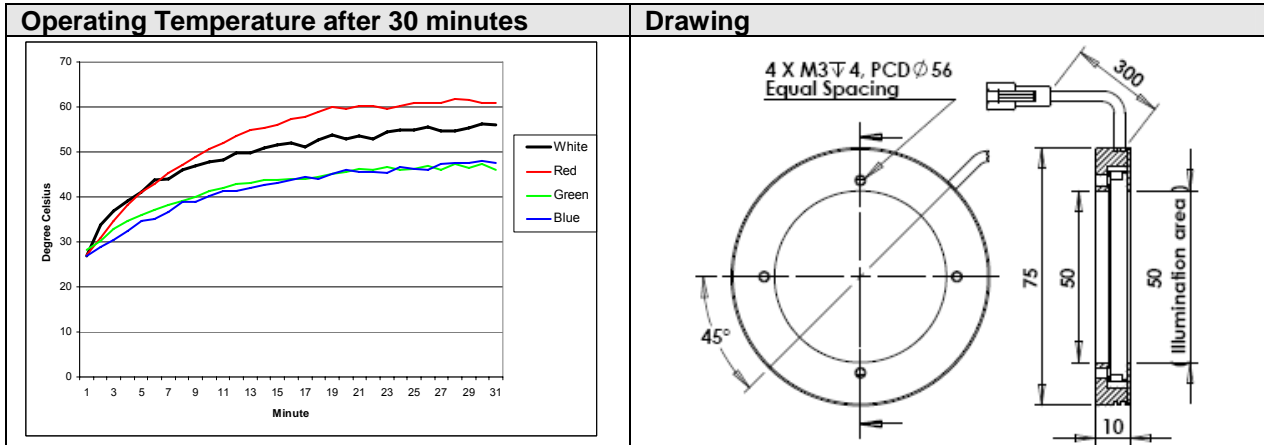
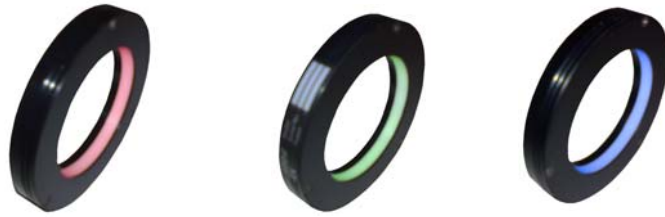




Rev. Date: 2009-04-11

Low Angle Ring Light

LDR-Si75LA1**Mechanical Data (TYP)**

| | |
|---------------------------|------------------------------|
| Casing Material | Aluminum + Diffuser |
| Storage Temperature Range | Temp 0-35°C, Humidity 20-85% |
| Weight | Approx. 60g |

Optical Data (TYP)

| | R | R24 | W | G | B |
|------------------------------|-------|-----|----------------|-------|-------|
| Illumination (number of LED) | 50 | 50 | 49 | | |
| Led Color | RED | | WHITE | GREEN | BLUE |
| Wavelength | 635nm | | xy=(0.31,0.32) | 525nm | 470nm |
| Led Package | PLCC4 | | SMD | | |

Electrical Data (TYP)

| | R | R24 | W/G/B |
|--------------------------------|--|--|--|
| Operating Voltage | 12V ± 2% | 24V ± 2% | 24V ± 2% |
| Reverse Battery Protection | YES | YES | YES |
| Supply Ripple Voltage | ≤ Vs ± 5% | ≤ Vs ± 5% | ≤ Vs ± 5% |
| Current Consumption | 0.40A | 0.20A | 0.14A |
| Power Consumption | 4.80W | 4.80W | 3.36W |
| Trigger Voltage | Continuous=12V Pulsing 12-24V 0-10% Duty Cycle | Continuous= 24V Pulsing 48V 0-10% Duty Cycle | Continuous= 24V Pulsing 48V 0-10% Duty Cycle |
| Operating after 30 minutes | Approx. 60°C | | Approx. 55°C |
| Additional Cooling Method | Attached to large machine part | | |
| Life span in continuous mode | 20,000 hours (drop to 50% intensity) at 25°C | | |
| Life span in strobe light mode | Est. >50,000 hours (drop to 50% intensity) at 25°C | | |
| Connection | JST SMR-02V, 1:+,2:- | JST SMR-03V, 1:+,3:- | JST SMR-03V, 1:+,3:- |
| Power Supply Selection | PSA-12V PSD-12V PSD-STL-12V | PSA-24V PSD-24V PSD-STL-48V | PSA-24V PSD-24V PSD-STL-48V |

Application (TYP)

| | |
|------------------------------|--------|
| Recommended Working Distance | 0-10mm |
|------------------------------|--------|