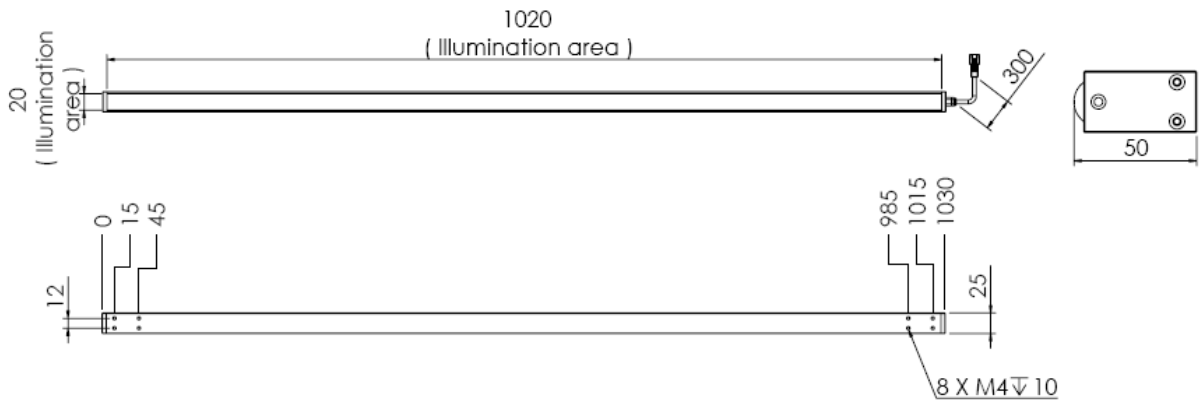


Line Light

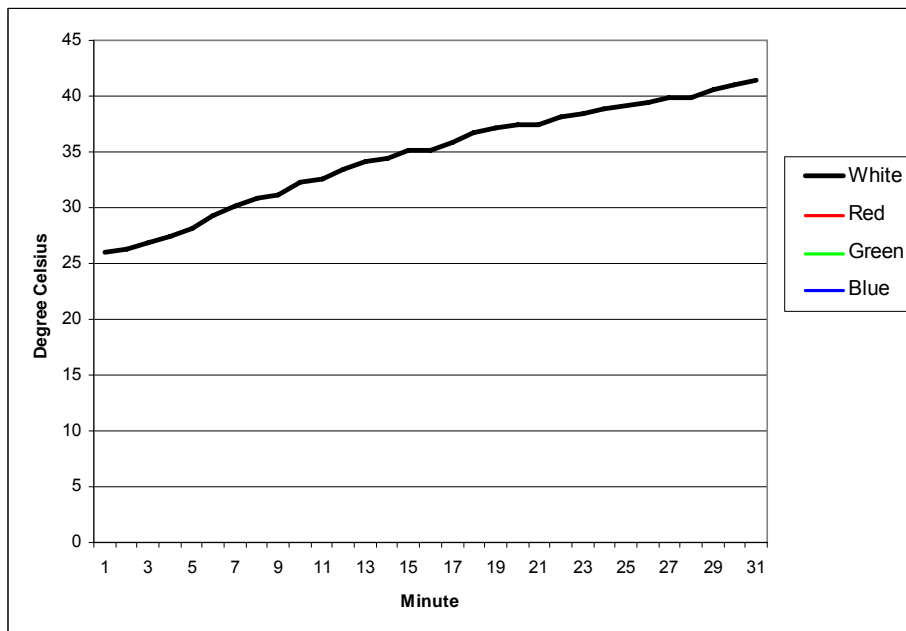
LLN-i1000



Drawing



Operating Temperature after 30 minutes



LLN-i1000

Mechanical Data (TYP)	
Casing Material	Aluminum + Lens
Storage Temperature Range	Temp 0-35°C, Humidity 20-85%
Weight	Approx. 2.5KG

Optical Data (TYP)	White
Illumination (number of LED)	120
Led Color	WHITE
Wavelength	xy=(0.31,0.32)
Led Package	P4

Electrical Data (TYP)	White
Operating Voltage	24V ± 2%
Reverse Battery Protection	YES
Supply Ripple Voltage	≤ Vs ± 5%
Current Consumption	2.0A
Power Consumption	48W
Supply Voltage	Continuous= 24V 0-10% Duty Cycle
Operating after 30 minutes	Approx. 43°C
Additional Cooling Method	Attached to large machine part
Life span in continuous mode	20,000 hours (drop to 50% intensity) at 25°C
Life span in strobe light mode	Est. >50,000 hours (drop to 50% intensity) at 25°C
Connection	JST SMR-03V, 1:+,3:-
Power Supply Selection	PSA-1-24V; PSD-2256-24V; PSD-2256S-48V; LIC-2256-U